

**TRIDENT**  
SOLUTIONS®

Innovation - Protection - Identification

## PRODUCT CATALOG



# GAS & OIL

**America's Largest Provider of Safety and Utility Marking Products.**

Presco Products, William Frick & Co., Pro-Line Safety, Rhino Marking & Protection Systems, and LEM Products Inc. have joined forces to create Trident Solutions. From above ground to below the surface, our innovative safety and identification products are at the frontlines 24/7 protecting what powers our everyday lives.

TridentProducts.com  
1-800-527-3295

# TABLE of CONTENTS

Marker Posts .....3

Post Accessories.....8

Surface Markers .....8

Flags.....11

Underground Warning Tapes .....11

Tracer Wire.....12

Grounding & Wire Connectors .....14

Test Stations .....16

Test Stations Accessories.....18

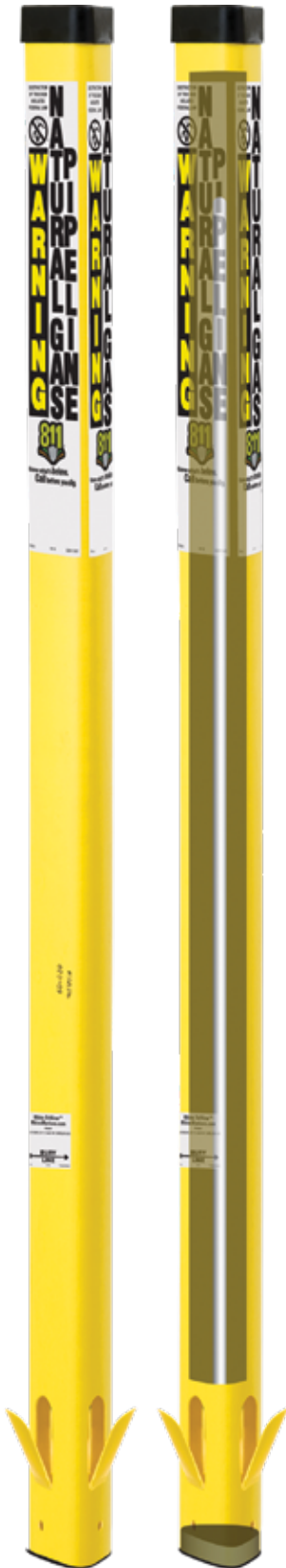
Rhino UV Armor Signs.....19

The Trident family is strategically positioned to serve our customer base as a “one-stop-shop” for Damage Prevention, Industrial Identification, & Safety Products.



SEE OUR FULL ONLINE CATALOG

TridentProducts.com  
1.800.527.3295



# TriView®

Your warning message needs to be seen from every direction. The patented construction of the TriView provides three readable warning messages and 360 degree visibility without additional cost.



The TriView is most durable marker available, guaranteed to rebound after impact from any direction, at speeds tested to 55 mph. RhinoPoly®, Flex PLUS Rod, combined with the triangular design allows the post to survive multiple impacts and continually return to its upright position.



Impact Testing

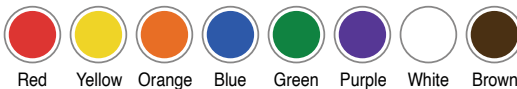
## DESCRIPTION:

- Standard Lengths: 48" | 54" | 60" | 66" | 72" | 78" | 84" | 90"
- Triangular post with colored cap. \*Decals sold separately
- Two sides = 3.1" | One side = 3"
- 360-degree visibility
- 18" bury-depth decal included
- Made with UV-stable RhinoPoly® – our proprietary blend of thermoplastics
- Internal Flex PLUS™ Rod secured with Polypropylene Insert friction-fit to bottom.
- Patented TriGrip Anchor™ for locking post into ground
- 10-Year Warranty

## WEATHER-TESTED AND PROVEN TO:

- Resist fading or cracking for a minimum of 10 years
- Remain flexible in temperatures from -40° to 150° F

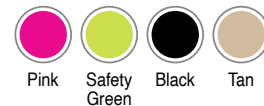
## STANDARD POST COLORS



## STANDARD CAP COLOR



## ALTERNATIVE POST COLORS



## ALTERNATIVE CAP COLORS



Custom colors available, call for details.

Options & Accessories: Page 8





## TriView Sleeve™

The TriView Sleeve is a simple version of the standard TriView. It comes with the same high-visibility and all weather durability as our standard version. It's installed over U-channel posts or round pipes to improve visibility, and to save the cost and labor of repainting.



### DESCRIPTION:

- Standard Lengths: 22" | 48" | 54" | 60" | 66" | 72" | 78" | 84" | 90"
- Triangular post with colored cap. \*Decals/U-channel post sold separately
- Two sides = 3.1" | One side = 3"
- 360-degree visibility
- Made with UV-stable RhinoPoly® – our proprietary blend of thermoplastics
- Standard and alternative colors available
- Pre-punched 3/8" hole for installation
- 10-Year Warranty

Options & Accessories: Page 8



## TriView Extension™

In many rural areas, markers over 8 feet in length are needed to mark utilities. Heavy snowfall, tall growing-crops and other vegetation can obscure the visibility of these utilities making them vulnerable to damage. Transporting and installing extra-long posts is difficult and expensive, so we found a solution: the TV Extension. It comes in two parts, and can be easily installed in the field over a new or existing U-channel post.



### DESCRIPTION:

- Total Standard Lengths: 108" | 120" | 132" | 144"
- Triangular post with colored cap. \*Decals sold separately
- Two sides = 3.1" | One side = 3"
- 360-degree visibility
- Made with UV-stable RhinoPoly® – our proprietary blend of thermoplastics
- Standard and alternative colors available
- Three piece system
- Includes U-channel post and two Drive Rivets for installation
- 10-Year Warranty

Options & Accessories: Page 8

## TriView XL™

Its larger profile makes the TriView XL™ the ideal product for remarking projects. You can easily retrofit fiberglass posts that are outdated, faded, or have fiberbloom. Instead of digging out old posts or tediously applying new decals to shoddy surfaces, simply slide the TVXL over the existing post and fasten in place with one weather-resistant screw. You can efficiently upgrade your flat posts with the TVXL in less than 60 seconds.



### DESCRIPTION:

- Standard Lengths: 48" | 54" | 60" | 66" | 72" | 78" | 84"
- Triangular post with colored cap. \*Decals sold separately
- Two sides = 4" | One side = 3.6"
- 360-degree visibility
- Made with UV-stable RhinoPoly® – our proprietary blend of thermoplastics
- Standard and alternative colors available
- 10-Year Warranty

Options & Accessories: Page 8

## RhinoDome™

For the fans of dome-style marker posts, we have you covered. What makes our RhinoDome™ exceptional is its durability and overall visibility. The graphics are hot-stamped directly into the post, ensuring the warning message will remain visible throughout the entire lifespan of the marker. The topper can be retrofit on to faded or outdated markers.



### DESCRIPTION:

- Standard Lengths: 48" | 54" | 60" | 66" | 72" | 78" | 84" | 90"
- The round design of the RhinoDome makes it visible from any direction
- Made with our special blend of thermoplastics and UV stabilizers
- Consists of a 21" dome topper
- 7 Standard topper colors available | 2 Alternative topper colors available
- 3 Standard post colors available
- 3.5" outside diameter and includes a standard one-color hot-stamped graphic on two locations
- 10" anchor tube for locking post into ground

Options & Accessories: Page 8





## Hybrid 3-Rail™

The Hybrid 3-Rail has engineered thermoplastic construction and a curved profile, making it easy to drive into the ground like a standard fiberglass post. Unlike standard fiberglass posts, the Hybrid post won't crack or splinter when impacted from the side or directly with a tire.



### DESCRIPTION:

- Standard lengths: 62" | 66"
- Width: 4"
- Made from extruded thermoplastic
- 8 Standard colors available
- Curved profile provides rigidity
- Temperature stable
- UV Stable
- Pointed end for easy installation
- Decals can be applied to front and back. \*Decals sold separately
- 10-year warranty



## Rhino 3-Rail™ Fiberglass

Rhino's 3-Rail fiberglass composite post uses the industry standard profile. It's our most drivable fiberglass marker and can be installed in almost any soil condition. The design allows for easy stacking and storing and has the durability to withstand repeated impacts when hit from the front or back.



### DESCRIPTION:

- Standard Lengths: 62" | 66" | 72"
- Width: 4"
- Pultruded fiberglass set in a composite resin
- Side-rails and reinforcing rib provide strength and rigidity
- Temperature stable
- Fire resistant
- Pointed end for easy installation
- 10-year warranty for posts that include our patented PolyTech Coating™
- Can withstand direct impacts and return to standing position
- Decals can be applied to front and back. \*Decals sold separately

Options & Accessories: Page 8

## Rhino 4-Rail™ Fiberglass

The Rhino 4-Rail™ is the industry's second most popular profile topped only by our 3-Rail Fiberglass Post. It's design allows the post to bend over when hit, then snap back into its normal upright position.



### DESCRIPTION:

- Standard lengths: 62" | 66" | 72"
- Width: 4"
- Pultruded fiberglass set in a composite resin
- Side-rails and reinforcing rib provide strength and rigidity
- Temperature stable
- Fire resistant
- Pointed end for easy installation
- 10-year warranty for posts that include our patented PolyTech Coating™
- Standard and alternative colors available. \*Alternative color shown
- Can withstand direct impacts and return to standing position
- Decals can be applied to front and back. \*Decals sold separately

Options & Accessories: Page 8

## Steel U-Channel Post

1.12 lb. U-channel posts are ideal for mounting utility warning signs, TriView Sleeves™ or TriView Extensions™. 2 lb. posts are designed to support aerial marker frames and larger signs.

### DESCRIPTION:

- Corrosion resistant metal
- 3/8" holes 1" on center

### 1.12LB. OPTIONS:

- Standard Coating: Green
- Alternative Coatings: Yellow, White, Orange, Galvanized
- Standard length: 6'
- Alternative lengths available upon request

### 2LB. OPTIONS:

- Standard Coating: Galvanized
- Alternative Coatings: Yellow, White, Orange, Green
- Standard length: 6'
- Alternative lengths available upon request



# Posts Accessories

## Pilot Hole Driver

Utilized with Flat Post and Hybrid Post, the Pilot Hole Driver is designed to break up hard ground.



## Universal Flat Post Driver

Easier installation of any flat or hybrid post.



## U-Channel Post Driver

The best way to install u-channel posts in most soil conditions



## Flat Post Anchor Barb

Installed on 3-Rail and 4-Rail fiberglass posts to help prevent vandalism.



## Reflective Bands

Factory installed 1" or 3" reflective bands used to enhance post visibility.



New Construction

Retrofit

## A-Tag™ Pavement Marker

Brightly colored, highly visible low-profile utility marker. Can be directly installed, slightly-recessed into asphalt or concrete so even snowplows will not destroy them. They can be used for a variety of applications including patch identification and identifying approximate location of buried pipes and valves.

### DESCRIPTION:

- 1.5" diameter
- 0.75" height – New Construction | 0.68" height – Retrofit
- UV Stable
- Warning message molded directly into the tag
- Generic & custom legends available
- Can be customized to include company name, phone number, unique message, or identifier

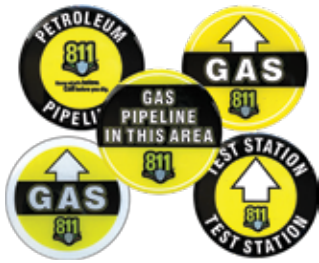


Retrofit A-Tag Drill Bit



Retrofit A-Tag Adhesive  
0.70 OZ = 50 Retrofit Installations





## Curb Markers

Curb Markers are durable surface markers that can be permanently attached to almost any surface! Using the same next-generation printing technology as our signs allows us to offer them in unlimited colors at no extra charge.

### DESCRIPTION:

- Impact and scratch resistant surface marker
- Printed with UV stable inks on a rigid substrate, then given a polyurethane dome
- Customizable: unlimited colors, custom shapes and different sizes available
- Can be printed on reflective or non-reflective substrates
- Common Applications Include: Curbs, Bridge Crossings, Road Crossings, Pipeline Crossings, Storm Drains, Hand Holes, Factory Walls, Telephone/Power Poles
- Curb Marker Kits available: Markers, Wire Brush, Adhesive, Adhesive Gun, Bag



## 7" Soil Marker

The flush-mounted 7 Inch Soil Marker is a highly visible and low-profile for where upright posts aren't practical. Can be walked on, mown over, and driven across.

### DESCRIPTION:

- Standard Version: 7" Round Disk | 13" Stake with Two Barbs
- Disk Colors: Yellow, Red, Orange, Green, Blue, Purple, White
- Temperature Stable/UV Stable
- Impact Resistant Polypropylene Disk
- Polypropylene Thermoplastic Stake. \*Stake can be purchased separately
- Hot Stamped warning legend is molded into the disk
- Generic & Custom Legends available



## 4" Soil Marker

The 4 Inch Soil Markers provides a highly visible, low-profile warning for areas where upright posts are not practical. Can be walked on, mown over, and driven across.

### DESCRIPTION:

- 4" round top and 8" molded stake
- Comes with or without anchor barbs
- Colors: Yellow, Red, Orange, Green, Blue, Purple, White
- Temperature and UV Stable
- Made with our proprietary blend of thermoplastics – RhinoPoly®
- Rugged and flexible
- Warning legend is molded into the top
- Generic & Custom Legends available





## Whisker Markers

These APWA color-coded Whiskers spring back up when run over by lawn mowers, graders and heavy equipment. They are easily and conveniently attached to wood stakes or driven into soil or asphalt with a 60-penny nails.

### DESCRIPTION:

- Sizes: 6"
- Virtually indestructible
- Nails not included



## Whisker Tags

Trident Whisker Tags are a great way to communicate your company's information when installing a whisker flag into the ground. Our whisker tags are completely customizable and UV resistant.

### DESCRIPTION:

- HDPE construction
- Size: 3" x 1.5", with .25" mounting hole
- Thickness: 0.030"
- Generic and custom legends available
- One color-screen print on 1-2 sides
- UV-light stable
- Reuseable (Whiskers & nails not included)



## Krylon Quick-Mark™ Paint

Water-based and solvent-based formulations available. One-coat coverage and Krylon's Spray-Thru™ cap allow for inverted painting ease. Use on concrete, pavement, gravel, grass, brick, asphalt.

### DESCRIPTION:

- Sizes: 17oz or 22oz
- 1-pass valve for bold, bright, visible marking (all APWA colors available)
- Non-clogging spray tip
- Fast-drying formula penetrates and adheres to hot, colored or wet surfaces
- VOC and MIR compliant
- Lead free (Shipping restrictions may apply)



## Hand-Held Wand With Flag Holder

Krylon's Quik-Mark™ Wheeler Hand Held Marking Wand helps you apply inverted marking paints, quickly and efficiently, with a comfortable pistol grip that is engineered to help reduce finger fatigue and improve efficiency.

### DESCRIPTION:

- 34" length Hand Held Wand
- Constructed of durable, rugged plastic and lightweight steel
- Flag holder holds both short & long flags
- New finger trigger lessens finger fatigue
- Other wand versions available



## Solid Color & Printed Flags

When communication is vital, we deliver! Ideal for above temporary marking, our high-quality specialty marking flags are manufactured in a wide range of sizes and long-lasting colors, ensuring consistent communication and high visibility.

### DESCRIPTION:

- Flag Size Options: 2" x 3" | 4" x 5"
- Steel Staff
- Staff Lengths: 12" | 15" | 18" | 21" | 24" | 30" | 36"
- 18 Long-lasting material colors
- Wind tear resistance for high performance
- 11 bright inks for high visibility
- Temperature stable down to -40 °F
- Flag is glued to staff – not wrapped
- Back-of-flag fold creates a larger print area
- Private labeling, UPC coding and other custom packaging requirements available
- Striped High Profile Flags available
- Generic & Custom Legends available



## Underground Detectable Tape

Easily found with a non ferrous locator, Underground Detectable Tape is made with durable laminate construction and is a low cost marking solution for underground assets.

### DESCRIPTION:

- Permanently imprinted with black ink
- Widths: 2" | 3" | 6" | 12"
- Length: 1000'
- Custom widths and lengths available
- Material thickness: 5 mil
- Temperature range: -60°F to 250°F
- Fully customizable legends to best fit your needs
- Domestically made option available



## Underground Non-Detectable Tape

Non-Detectable Underground warning tape is designed to be buried above communication cables and other utility installations to prevent damage during excavation.

### DESCRIPTION:

- Heavy metal free
- Co-extruded polyethylene tape
- Widths: 3" | 6"
- Length: 1000'
- Custom widths and lengths available upon request
- Thickness: 4 mil | 6 mil
- Fully customizable legends to best fit your needs





## Pro-Trace® HDD-CCS PE45

HDD-CCS features a higher break-load and tensile strength compared to solid copper. Designed for directional boring and pipe bursting installations where tensile strength is critical.

### DESCRIPTION:

- 600-700% Stronger than solid copper
- Rigid flexibility and memory with good ductility. Made for boring.
- Solid or Stranded (4 AWG Only)
- Gauge sizes: 4 AWG | 8 AWG | 10 AWG | 12 AWG | 14 AWG
- Jacket thickness: 45 mil | 50 mil (4 AWG Only)
- Direct Burial Rated High-density, HMWPE insulation
- Reel sizes: 500' | 1000' | 2500' | 5000'
- Custom lengths available upon request



## Pro-Trace® HF-CCS PE30/PE45

HF-CCS PE30/PE45 tracer wire embodies the flexibility and memory of solid copper while still being stronger at lower cost. It is commonly used on for Open-Cut, Plow-In, and Blow-In installations.

### DESCRIPTION:

- Equal signal strength to solid copper
- Solid Formation
- Gauge sizes: 8 AWG | 10 AWG | 12 AWG | 14 AWG | 16 AWG | 18 AWG
- Jacket thickness: 30 mil | 45 mil
- Direct Burial Rated High-density, HMWPE insulation
- Reel sizes: 500' | 1000' | 2500' | 5000'
- Custom lengths available upon request



## Pro-Trace® HS-CCS PE30/PE45

HS-CCS PE30/PE45 tracer wire strikes a perfect balance of strength and flexibility compared to solid copper while minimizing damage during installation and while in service. It is best suited for Open-Cut, Plow-In, and light directional boring installations.

### DESCRIPTION:

- Superior abrasion resistance to gouging, scraping, and nicking
- Solid Formation
- Gauge Sizes: 8 AWG | 10 AWG | 12 AWG | 14 AWG | 16 AWG | 18 AWG
- Jacket Thickness: 30 mil | 45 mil
- Direct Burial Rated High-density, HMWPE insulation
- Reel Sizes: 500' | 1000' | 2500' | 5000'
- Custom lengths available upon request



## Copper PE30 & PE45

Copper PE30/PE45 is a soft drawn annealed tracer wire made from oxygen free copper cathode. It has fantastic flexibility and memory properties. It is commonly used on for Open-Cut, Plow-In, and Blow-In installations.

### DESCRIPTION:

- Solid or Stranded
- Gauge sizes: 6 AWG | 8 AWG | 10 AWG | 12 AWG | 14 AWG
- Jacket thickness: 30 mil (30V) | 45 mil (600V)
- Direct Burial Rated High-density,
- Moisture, Chemical, Oil, Impact, Crush, and Abrasion Resistant
- Reel sizes: 500' | 1000' | 2500' | 5000'
- Custom lengths available upon request



## Copper TWU/UF

Copper TWU/UF is a soft drawn annealed tracer wire made from oxygen free copper cathode. It has fantastic flexibility and memory properties. It is commonly used on for Open-Cut, Plow-In, and Blow-In installations.

### DESCRIPTION:

- Solid or Stranded
- Gauge sizes: 8 AWG | 10 AWG | 12 AWG | 14 AWG
- Jacket thickness: 60 mil | 80 mil (8 AWG Only)
- Direct Burial Rated PVC insulation
- Moisture, Chemical, Acid, Oil, Crush, Abrasion Resistant
- Reel sizes: 500' | 1000' | 2500' | 5000'
- Custom lengths available upon request



## Copper THHN & TFN/TFFN

Copper THHN & TFN/TFFN is a soft drawn annealed tracer wire made from oxygen free copper cathode. It has fantastic flexibility and memory properties. It is commonly used on for Open-Cut, Plow-In, and Blow-In installations.

### DESCRIPTION:

- Solid or Stranded
- THHN Gauge Sizes: 4 AWG | 6 AWG | 8 AWG | 10 AWG | 12 AWG | 14 AWG
- TFN/TFFN Gauge Sizes: 16 AWG | 18 AWG
- PVC Jacket, with Nylon Coating
- Moisture, Chemical, Oil, Crush, & Abrasion Resistant
- Reel sizes: 500' | 1000' | 2500' | 5000'
- Custom lengths available upon request





## Tracer Wire Ground Rod

Ground Rods enable the signal transmission to travel much more fluidly, and enable the use of lower frequency to identify the line and prevent less signal bleed off (pinpoint accuracy) during the locate process.

### DESCRIPTION:

- Properly grounds tracer wire system to complete circuit, ensuring increased signal strength accurate locates
- 20 ft of built-in lead wire offers flexibility
- Twist on connector included for splicing lead wire to tracer wire
- HDPE cap



## Locking Barrel Connectors

### DESCRIPTION:

- Moisture resistant construction
- Will not deteriorate from exposure to water, oxidation, rust, chemicals
- Works with gauge sizes 14, 12 and 10
- Works for both 30 & 45 mill jacket
- Connects to wire without removal of any wire jacket or insulation
- Provides a tightly locked connection, impervious to fill replacement



## Pro-Trace® TW Connector

### DESCRIPTION:

- Injection molded from durable polycarbonate
- Silicone filled
- Used to splice or branch-off multiple wires to maintain continuity
- Integrated strip guide
- Voltage rating up to 300 volts
- Available Colors: Blue | Yellow
- Designed to work with copper, copper-clad steel & stainless steel
- Water and corrosion proof
- Impact and moisture resistant



## Tracer-Lock® Connector

### DESCRIPTION:

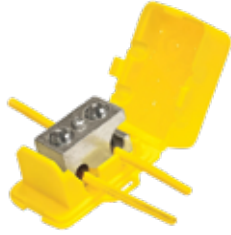
- Engineered for direct-bury applications
- One-piece Injection molded polycarbonate mechanical connector
- Can be installed as an "in-line" or "lateral" connection without needing to strip wire
- Breakaway shear nut system insures simple, & correct installation
- Pre-filled with anti-oxide for longevity, & superior electrical continuity
- Compression locking design to prevent wire pullout
- Works with gauge sizes 18-8 AWG
- Moisture, temperature, corrosion & impact resistant



## Twist Connectors

### DESCRIPTION:

- Ideal for splicing lines
- Water and corrosion-proof
- Two size options: Regular & Large
- Available Colors: Blue | Yellow
- Designed for direct bury applications
- Pre-filled with dielectric silicone sealant that never hardens
- Fast and easy installation
- Wire Range: min 22-AWG / max 8-AWG



## MTS Connector

### DESCRIPTION:

- 3-way connection eliminates need to cut the main line
- Designed for direct bury applications
- Pre-filled dielectric silicone sealant protects wire

- Waterproof and corrosion resistant
- Fast and easy installation
- Wire Range: min 14-AWG / max 10-AWG



## Pipe Burst MTS Connector

### DESCRIPTION:

- Large size can accommodate pipe burst wire
- 3-way connection eliminates need to cut the main line
- Pre-filled dielectric silicone sealant protects wire

- Designed for direct bury applications
- Waterproof and corrosion resistant
- Fast and easy installation
- Wire Range: 14-8 AWG solid copper, 14-6 AWG stranded copper, 14-10 AWG steel core (CCS)



## Self-Stripping MTS Connector

### DESCRIPTION:

- Self-stripping for fast/easy Installation
- Designed for direct bury applications
- Pre-filled dielectric silicone sealant protects wire

- Designed for use with solid/stranded copper and steel core tracer wire with .030" and .045" thick insulation
- Waterproof & corrosion resistant
- Wire Range: min 14-AWG | max 12-AWG



## Twist-On with Strain Relief Connector

### DESCRIPTION:

- Water and corrosion-proof dielectric sealant
- Available Colors: Blue | Yellow

- Gauges available: 10 | 12 | 14
- Easily installed and will not open during backfilling
- Recommended for solid copper wire only



## Wire Nut & Tube Connector

### DESCRIPTION:

- Water and corrosion-proof dielectric sealant
- Gauges available: 10 | 12 | 14

- Easily installed
- Impact resistant





## TriView Test Station™

The TriView Test Station is an above ground test station that provides locators easy access to tracer wire. The post comes with a removable cap that protects the 11-hole terminal board which offers room for multiple terminals and custom configurations.



### DESCRIPTION:

- Standard Lengths: 54" | 60" | 66" | 72" | 78" | 84" | 90"
- Standard and alternative colors available
- Triangular post with colored cap. \*Decals sold separately
- Two sides = 3.125" | One side = 3.0232"
- Industry standard 11-hole terminal board
- Comes standard with 2 terminals
- 360-degree visibility
- 18" bury-depth decal included
- Made with UV-stable RhinoPoly® – our proprietary blend of thermoplastics
- Patented TriGrip Anchor™ for locking post into ground

### WEATHER-TESTED AND PROVEN TO:

- Resist fading or cracking for a minimum of 10 years
- Remain flexible in temperatures from -40° to 150° F

Options & Accessories: Page 17



## RhinoDome Test Station™

The RhinoDome is an above ground test station that provides easy access to tracer wire. The dome style post comes with a friction-fit cap that protects the industry standard 11-hole terminal board.

### DESCRIPTION:

- 21" dome topper and removable cap
- 10" anchor tube that secures post into the ground
- Standard Lengths: 66" | 72" | 78" | 84" | 90" | 96"
- Hot stamped graphics in two locations
- Industry standard 11-hole terminal board
- Comes standard with 2 terminals
- Round profile provides great visibility
- Made with a proprietary blend of thermoplastics, RhinoPoly®
- Optional cap lock available
- Generic & custom legends available

Options & Accessories: Page 17





## HideOut™ Test Station

The HideOut Test Station is ideal for areas where above-ground test points are not practical. The flush-mounted marker/test point can be mowed and walked over; and the locking cap protects the telescoping terminal board from vandalism.

### DESCRIPTION:

- 24" total length
- Suitable for grass and soil
- Comes standard with 2 terminals mounted on an 11-hole terminal board
- Patented TriGrip Anchor™ for locking body into the ground
- Hot stamped graphics
- Locking cap included
- Locatable metal plate included
- Generic & custom legends available

Options & Accessories: Page 17



## TracerPit Test Station

TracerPit is a flush-mounted test station that provides locate technicians a direct connection to their transmitter allowing for faster locates in high traffic areas.

### DESCRIPTION:

- Low profile design
- Standard with 2 or 5 terminals
- 12" fixed pipe body. Available with telescoping pipe body up to 24"
- Suitable for grass, concrete, and roadways (except asphalt)
- Detectable by ferrous metal detector
- APWA color coded lid for identification
- Locking lid for secure access
- Iso-Switch TracerPit available, pg 17



## TracerLet Test Station

TracerLet is an above ground test-station-head for mounting on new, or existing PVC conduit.

### DESCRIPTION:

- Protects tracer wire ends from corrosion and the elements
- Ideal for end of service termination and aesthetics
- Made with high strength polycarbonate
- Available with 1-3 terminals
- Use with any 1" PVC conduit
- Fire hydrant flange mounting kit available (adapter, bracket, and fasteners)



**Iso-Switch® for Test Stations**  
 Iso-Switch provides direct connection for locate technicians to hook their transmitter to within a tracer wire system. It simplifies the locating setup, saving time and labor without the hassles of manipulating terminal hardware. This item is designed for several different types of access points.

**DESCRIPTION:**

- Iso-Switch TracerPit fits the Tracer Pit Test Station
- Iso-Switch TracerPost fits the TriView, RhinoDome, and HideOut Test Stations
- Iso-Switch Handhole is designed for handholes and vaults with and without a busbar
- 5 stainless steel terminals (4 Tracer & 1 Ground) allow direct connection to individual tracer wire legs
- Water resistant switch eliminated the need to manipulate connections in the field
- Routes signal along desired path to any point in the tracer wire system
- Reduces times and simplifies labor associated with locating

**Extra Terminals**

- TriView Test Station
- RhinoDome Test Station
- HideOut Test Station



**Shunts**

- TriView Test Station
- RhinoDome Test Station
- HideOut Test Station



**Cap Lock**

- TriView Test Station
- RhinoDome Test Station



**1" or 3" Reflective Bands**

- TriView Test Station
- RhinoDome Test Station



**Grounded Locate Plate**

- TriView Test Station
- RhinoDome Test Station
- HideOut Test Station



**Isolation Lever**

- TriView Test Station
- RhinoDome Test Station
- HideOut Test Station



**Factory Installed Tracer Wire**

- TriView Test Station
- RhinoDome Test Station





## THE POSSIBILITIES ARE TRULY ENDLESS! The Rhino UV Armor difference.

Our Rhino UV Armor Signs are engineered with a patented process and come with a 10-year warranty. They are available with unlimited colors, shapes, and mounting holes at no additional cost. These signs can be single or double-sided and remain cost-effective. Multiple panels can be combined for larger applications such as river crossing signs.



### Aluminum Composite Material (ACM)

#### DESCRIPTION:

- 2 thinly sliced sheets of aluminum thermo-bonded to a polyethylene core
- Thickness: 3 mm
- 50% lighter than aluminum, and twice as rigid
- Will not warp or bend over time
- Custom shapes: \$0
- Unlimited color printing: \$0
- Extra holes for mounting: \$0
- Generic & Custom legends available
- Design Services available

#### ACM PRODUCT PROPERTIES:

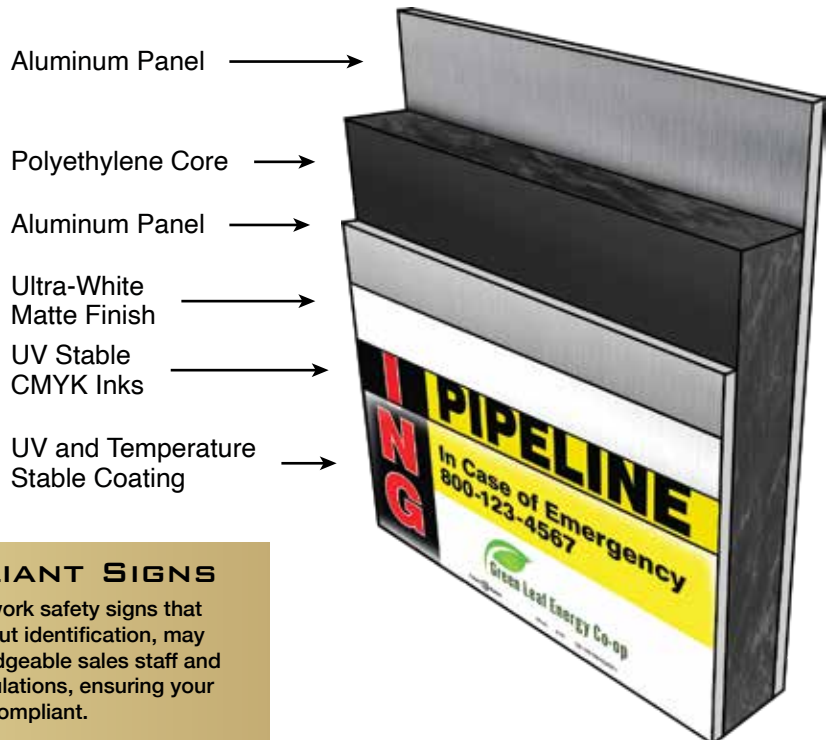
Weight (Kg/m2)	3.55
Thermal Performance R Values	0.0057
Core Composition	Polyethylene
Flammability BS476	Part 6: Class 0, Part 7: Class 1

#### ACM DIMENSIONAL TOLERANCES:

Thickness (mm)	-0 + 0.2
Thermal Expansion	2.4mm/m @100°C Temp Difference
Aluminum Thickness (mm)	±0.02
Flammability BS476	Part 6: Class 0 Part 7: Class 1



The Rhino UV Armor process increases durability, which is part of why our signs can take a shotgun blast without the graphics being destroyed outside the hole area. The process also ensures our signs remain temperature stable from -50° to +150° F. and protect from prolonged exposure to UV light. UV light causes damage over time, usually resulting in fading and/or cracking of full-color graphics.



#### ANSI AND OSHA COMPLIANT SIGNS

ANSI and OSHA require that job sites include work safety signs that indicate and define specific hazards that, without identification, may lead to injury or death. Trident Solutions' knowledgeable sales staff and production designers stay on top of current regulations, ensuring your warning/safety signage system is compliant.





**THANK YOU**  
FOR BEING A PART OF  
THE SOLUTION

**TRIDENT**  
SOLUTIONS®

Innovation - Protection - Identification

**PRESCO**®  
A TRIDENT COMPANY

WILLIAM  
**FRICK**™  
& COMPANY  
A TRIDENT COMPANY

**PROLINE**  
SAFETY PRODUCTS  
A TRIDENT COMPANY

**Rhino**  
MARKING & PROTECTION SYSTEMS  
A TRIDENT COMPANY

**LEM**®  
PRODUCTS INC  
A TRIDENT COMPANY

TridentProducts.com | 1-800-527-3295

©2024 Trident Solutions®

